

Southwest lines

A monthly publication for members of Southwest Iowa Rural Electric Cooperative

May 2026

Employee Updates

Brycen Wallace

Congratulations to Corning Lineman, Brycen Wallace for receiving his 5-year service award!



SAVE THE DATE

2026 Southwest Iowa REC Annual Meeting
Thursday, September 10, 2026



Board Approves Patronage Allocation

In March, the Board of Directors allocated margins for 2025. Margins are the “bottom line” on our financial operating statement when all the expenses of providing electric services to our member-owners are deducted from the revenues taken in. After the annual independent audit of the books, these margins are allocated to the various reserve accounts and also as patronage capital to the member-owners who received service from the Cooperative during the year the margin was created.

For 2025, margins of \$460,632.80 will be allocated to the member-owners based upon the amount each paid for electricity in proportion to what the other member-owners paid. The payment of patronage capital is deferred until a future point in time when the financials of the Cooperative allow a refund. Member-owners who purchased electricity from us in 2025 should receive a patronage allocation notice in the mail in late May or early June.

Tree Cutters in Area



Friest Tree Experts will be in the area around April 20th. The work will be done in Union County, south of Afton, and the surrounding areas of Aripse. They will be doing tree clearing, trimming, chipping, and tree grinding.

The tree cutting crew will be in Union County in the following townships: Union, Pleasant, Sand Creek, Grant, & Highland.

The spraying crew will be in Ringgold & Taylor Counties in the following townships: Ringgold County - Lincoln & Grant

Taylor County - Platte, Marshall, Grant, Clayton, & Gay

We are closed for Memorial Day
May 25, 2026!



ANNUAL MEETING INFORMATION & ELECTION PROCESS



Phil Kinser CEO

The 23rd Annual Meeting of Southwest Iowa Rural Electric Cooperative will be held at the Lenox Community Center on September 10, 2026. A major item of business at this meeting will be the election of three (3) directors to a term of three (3) years. The following information on the director election process and qualifications comes from the Bylaws of the Cooperative.

There shall be two (2) numbered Geographic Regions for the Cooperative, each of which shall be divided into four (4) Districts, and election of directors shall be by such districts, with one (1) director representing each District. In addition, two (2) at-large directors will be elected, one (1) from each Region. Directors shall reside in and receive service from the Cooperative at a location within the district (or Region in the case of at-large directors) they are elected to represent. The geographic area of each Region shall initially be as set forth in the Plan of Consolidation of Southwest Iowa Rural Electric Cooperative, and revised as necessary by the Board of Directors. The district boundaries shall be described hereafter in these Bylaws of the Cooperative and shown on a map of the cooperative service area, with such description and map maintained at all offices of the Cooperative and kept available to members.

Any member of the Cooperative shall be eligible to become a director if said member has a legal capacity to enter into a binding contract and said member's election as a director would not violate any other provision of the Bylaws or the Articles of Incorporation of the Cooperative.

Additional Director Qualifications. In addition to the foregoing, No Member shall be eligible to become or remain a Director or to hold any position of trust in the Cooperative who:

- (1) within five (5) years preceding a director candidate's nomination was or during service on the Board of Directors is finally adjudged to be guilty of a felony;
- (2) within five (5) years preceding a director candidate's nomination was an employee of the Cooperative or the spouse of an employee of the Cooperative;
- (3) is or becomes, or at any time during the five (5) years preceding a director candidate's nomination shall have been, employed by a labor union which represents, or has represented, or has endeavored to represent any employees of the Cooperative;
- (4) is a grandparent, parent, co-habitant, child, or grandchild of an employee of the Cooperative;
- (5) is a person that is a grandparent, parent, co-habitant, child, or grandchild of an incumbent director whose district seat is not up for re-election at that time;
- (6) is in any way employed by or substantially financially interested in an enterprise competing with the Cooperative or any Cooperative-affiliated business;
- (7) is or becomes the full-time employee or agent of, or who is or becomes the full-time employer or principal of, another director;
- (8) is engaged in conduct that is a violation of law or violation of a Cooperative policy or policies, or whenever a director has materially failed to satisfy his/her duties as a director, including the duty to regularly attend meetings of the Board of Directors; or
- (9) is employed by, materially affiliated with, or has a financial interest in, any individual or entity possessing a conflict of interest with the Cooperative or a Cooperative subsidiary.

For purposes of this Section, financially interested shall not include beneficial ownership of less than 5% of the bonds or the combined voting power of all issued and outstanding voting securities of a publicly held corporation whose stock is traded on a major stock exchange or quoted on NASDAQ.

In regard to the restrictive provisions of this Section that are based upon close relative relationships, no incumbent director shall lose eligibility to remain a director or to be re-elected a director if, during a director's incumbency, a director becomes a first kindred relative of another incumbent director or of a Cooperative employee because of a marriage or an adoption to which the director was not a party.

The following directors' terms expire at the Annual Meeting in September:

Marilyn Werner (Region 1, District 2) – Union County: Sand Creek Township, Jones Township, and Pleasant Township. Ringgold County: Sections 1-24 of Tingley Township, Union Township.

Kay Fast (Region 2, District 6) – North Border: U.S. Highway #34 to U.S. Highway #71, J20 to U.S. Highway #48. South Border: Assigned Area of Service. West Border: U.S. Highway #71 to J20, U.S. Highway #59. East Border: U.S. Highway #148.

Bonnie Larson (Region 1, At-Large) – All of the former service territory of Rideta Electric Cooperative, Inc.

Candidates for election to the Board of Directors shall be nominated by a Nominating Committee, which Committee shall be elected by the Board of Directors, not less than sixty (60) nor more than one-hundred twenty (120) days before the date of a meeting of the members at which directors are to be elected. The Nominating Committee shall consist of no less than three (3) nor more than ten (10) members who shall be selected so as to give equitable representation on the Committee to the geographical areas served by the Cooperative. Said Nominating Committee members so elected shall nominate candidates for election to the Board of Directors and a list of the nominations so made shall be posted at the offices of the Cooperative no less than 45 days prior to the date of the meeting.

Continued page 3

Continued from page 2

Any twenty (20) or more members may make other nominations in writing over their signatures not less than thirty (30) days prior to the meeting at which directors are to be elected, and the Secretary shall post the same at the same place where the list of nominations by the Committee is posted; such nominations so made by such members to be subject to the same service location requirements as nominations by the Nominating Committee heretofore prescribed.

The election of the directors shall be by ballot, and each voting member shall be entitled to cast one ballot for each director to be elected from the member's Region. To the extent the same is specifically authorized by the Board of Directors, members may vote by mail-in ballot. The election of directors shall be subject to ratification by a majority of all members present at the Annual Meeting of members, and directors elected shall qualify and take office immediately following the Annual Meeting of Members.

If you are interested in being considered to serve on the Nominating Committee or as a candidate for one of these director positions, and meet the requirements stated above, please contact Phil Kinser at 888-220-4869 to discuss the matter further.

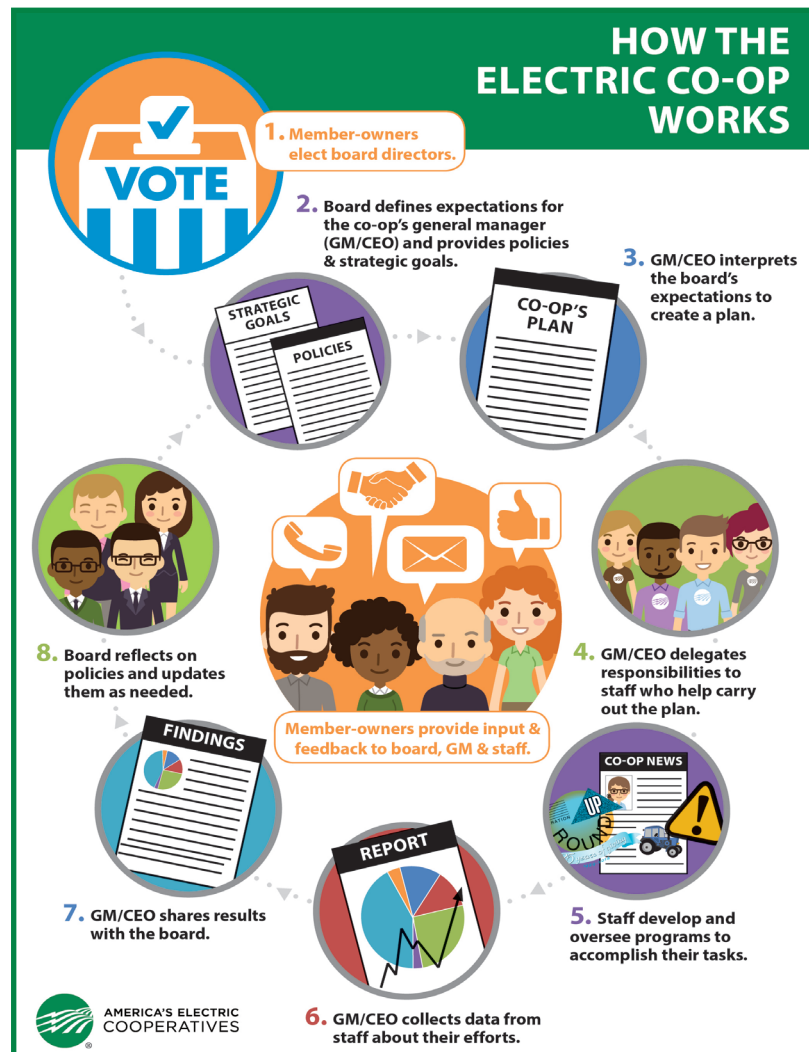
Reduce Energy Use During Peak Hours

Peak hours are the busiest times for your local electric cooperative, since many people are using electricity at the same time. In addition, it costs your co-op more to generate electricity when demand soars during peak periods – and the cost of your electricity also may rise. Obviously, using less electricity during peak periods can save your co-op – and you – money.

Here's how you can help during peak hours, which generally are on the hottest summer days between 4 p.m. and 9 p.m.:

- Shift household chores and activities away from peak periods. Wait to run your dishwasher until you go to bed, for instance.
- If you have air conditioning, turn the thermostat up when you are gone and at night. Cool only the rooms that you are using.
- Use the most energy-efficient appliances you have. Your microwave oven, for example, uses considerably less energy than your stove or cooktop.
- If you're buying a new appliance, make sure you get a highly efficient one. Look for ENERGY STAR® labels when you're evaluating different models.
- Be aware of your energy consumption, and try to get in the habit of using energy efficiently year-round.

Use the energy you need, but use it wisely! You'll help your co-op avoid building expensive new power plants – and that, in turn, will help keep your electric rates stable.



HEAT PLUS METER READINGS



The Heat Plus rate season will end May 31, 2026. It is important that members do not turn off power to those meters because we still need to be able to read them each month. The Heat Plus rate will begin again on October 1, 2026.

SAFETY FIRST, SAFETY ALWAYS

MAY IS ELECTRICAL SAFETY MONTH

DANGER

ELECTRICAL HAZARD

MOVE OVER SLOW DOWN



Please make room for roadside crews

By Abby Berry

When the power goes out, so do Southwest Iowa REC's line crews. Lineworkers are the first to respond after an outage occurs, and they work tirelessly to restore power to the communities we serve.

If you're traveling and see one of our crews on the side of the road, we kindly ask that you move over if possible and give them a little extra space to work. We deeply care about the safety of all, and this extra precaution ensures just that.

If you approach a crew while traveling on a two-lane road, moving over to the next lane might not be an option. In this case, we simply ask that you slow down when approaching roadside crews. If you approach a crew while traveling on a four-lane road, and safety and traffic conditions allow, we ask that you move over into the far lane.

Iowa's Move Over Law, which was established in 2002, requires motorists to change lanes to give space for vehicles stopped along the side of the road. Anyone who violates the law could face a fine of up to \$10,000.

Utility crews aren't the only ones who could use the extra space. Emergency responders, such as police officers, firefighters and emergency medical technicians, often find themselves responding to emergency situations near busy roadways. We ask that you follow the same procedures mentioned above to help keep these crews safe.

There's plenty of room for all. Let's work together to keep everyone safe on our local roadways.

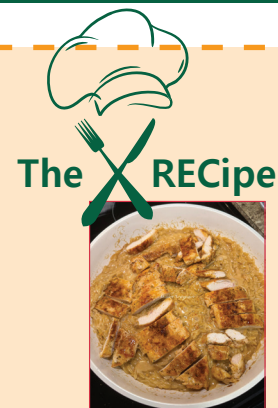
Cowboy butter chicken & orzo recipe

Ingredients

- Olive oil
- 2 chicken breasts
- Seasonings: Kinders Cowboy butter, garlic powder, onion powder, oregano, paprika
- 2 tbsp butter
- 1 tbsp Minced garlic
- 16oz orzo
- 32 oz chicken broth (i used bone broth, use what you prefer)
- 1/2c heavy whipping cream
- 1 cup of Parmesan cheese

Directions

- add olive oil to a pan
- season your chicken with cowboy butter, garlic powder, onion powder, oregano and paprika
- add the chicken to a pan on medium heat and cook until 165 degrees
- remove the chicken and add in 2 tbsp butter and 1 tbsp minced garlic— let that cook for 1 min
- next add in your orzo and let toast for 1-2 mins stirring frequently
- pour in 32 oz of chicken broth, stir and let simmer on medium heat for 15 mins or until pasta is tender
- once pasta is fully cooked add in the heavy cream, Parmesan cheese, extra cowboy butter, onion powder and garlic powder
- stir until combined and top with your cooked sliced chicken



RECare – Customer Contribution Fund

Southwest Iowa REC's RECare program makes it easy to help Cooperative neighbors in need this winter. With rising heating fuel prices this season, more and more Iowans are seeking assistance with energy, heating and weatherization costs. While some federal and state dollars exist to help those in need, there are still shortfalls.

Consider a monthly contribution to Southwest Iowa REC's RECare program. Your contribution – whether it is \$1 or \$10 a month – when combined with those of other generous members, can go a long way in helping those who can't afford winter's heating bills. To help, fill out the form:

Consumer Authorization Form

Yes, I want to be a part of "members helping members" and contribute to RECare.

I will make a 1-time contribution to RECare. My check is enclosed.

I will contribute \$_____ per month to RECare. I understand that this amount will be automatically added to my monthly electric bill.

Name _____ Account # _____

Address _____

City _____ State _____ ZIP _____

Mail to: RECare – SW Iowa REC

2248 Avenue of Industries; Box 367; Corning, IA 50841

OR RECare – SW Iowa REC

1502 W South Street; Box 391; Mt Ayr IA 50854



Corning
2248 Avenue of Industries., Corning, IA 50841

Mount Ayr
1502 W. South St., Mount Ayr, IA 50854

Phone Number: (888) 220-4869

Southwest Iowa REC is an equal opportunity provider and employer.

Board of Directors

Marilyn Werner, President **Phil Kinser, CEO**
Mark Herzberg, Vice President
Kay Fast-Deyoe, Secretary
Jason Smith, Treasurer
Alan Spencer, Adam Boswell, Dana Morgan
Justin Akers, Bonnie Larson, Dale Walkup