

Southwest Lines

A monthly publication for members of Southwest Iowa Rural Electric Cooperative

Corning | Mount Ayr | Stanton

March 2025

Help us Find these Former Members

We are looking for the following former members of the cooperative. This month, we will be showing names listed A-J and next month we will do K-Z. These members have patronage checks at our offices. If the member is deceased, we would like to have a family member contact us with estate information so we can refund their patronage. Thank you for your help



ADAMS	MICHELLE	BRIGGS	AUDRIA	DAWSON	CHARLIE K	GRIGGS	WILLIAM F
ALLISON	RYAN	BRINER	LISA	DELUHERY	MATT	HAIGWOOD	MIKE
ALMQUIST	GARY	BRITTEN	HELEN	DINGMAN	KENNY	HALL	LINDA S
ANDERSEN	CHRISTOPHER	BROSHAR	FLOYD	DOWNING	CHRISTOPHER C	HAMMERS	CLYDE A
ARCHER	JUSTIN	BROTT	JEFF	DOYEN JR	CLEMENT J	HAMMERS	HOMER
ARNOLD	RICK E	BROWN	FLORA	DRAKE	MERL	HARRIS	RICHARD D
BACON	JEAN	BROWN	HAROLD	EADS	TOM R	HARTSOOK	JIM
BAIRD	JAMES	BROWN	JASON S	EAGLES	MITCH	HEBENSBERGER	KENNETH
BARBER	DUSTY	BROWN	JEFF	ELLIOTT	ALICE	HEIKEN	RANDY
BARKER	CHRISTY	BRUCE	COLIN S	ELMORE	AMANDA	HELTON	LYNN
BARNETT	SHANE	BRYANT	PAUL	ERICKSON	ELDON	HENDERSON	J R
BARNETT	WILLIE	BULLER	SHIRLEY L	FAUX	EVERETT	HERZBERG	ALEXANDER
BARNUM JR	HARRY	BULLOCK	DOUGLAS	FELTS	TIM	HICKMAN JR	RALPH
BARSNESS	GARY W	BURG	GARY	FICHTER	JAMES L	HICKMAN SR	RALPH
BAYER	EUGENE	BURNS	IAN M	FILKINS	EVELYN G	HILL	MARY L
BEHRENS	JOSH A	BUTCHER	BECKIE	FINDLEY	JAMES R	HILL	ROWDY L
BELL	DAVID	BYRIEL	JO	FLOWERS	DAN L	HOFFMAN	MARY
BELL	MAX	CARMICHAEL	TAMMY	FREDRICKSON	MATT	HOOVER	TERESA
BERNER	WILLIAM	CECETKA	JAMES R	FUDGE	JIM	INSKEEP	BRUCE
BERRY	KYLE D	CELSI	CHARLENE	FULLER	MICHAEL	JAMES	GARY
BIRD	FRANCES	CHRISTIANSON	JOAN	GALLUP	SCOTT	JEFFERSON	WILLIAM D
BIRKETT	KEVIN W	CLARK	JEFFRY T	GANNON	LORI	JOHNSON	ALLISON
BLADES	DAVID E	CLOER	DAVID S	GLASSINGER	DANNY	JOHNSON	LAURIE
BLAIR	DUANE	COLWELL	WENDY	GLASSINGER	TERRY	JOHNSON	MARK P
BLAKE	JEFFREY	CONNET	DAWN	GOODALE	OPAL	JOHNSON	MERVYN
BLEECHER	CHRISTINE	CREES	JASON	GOODNIGHT	RICK	JONES	CHAS E
BODNAR	ROBERT A	CURRENT	CHAS	GOODWIN	CAROLYN	JONES	DAVID
BOGDAN	JOHN A	DAILY	BOB	GOSS	JACKIE	JONES	JORDAN D
BRADLEY	ELMER	DALE	LOUVA G	GRAY	EDWARD	JONES	SCOTT
BRIANT	ROBERT E	DAVENPORT	FRANK E	GREEN	JOAN		

Lineworker Appreciation Day

America's electric cooperatives have designated the second Monday of April as National Lineman Appreciation Day. Southwest Iowa REC gratefully supports our 16 linemen that maintain roughly 2,525 miles of power lines in our service territory and recognizing the risks they take to carry out their daily duties. We would like to take this opportunity on April 14th to acknowledge and appreciate those men at Southwest Iowa REC that work so hard to provide our members with safe and reliable energy 24 hours a day throughout the entire year!



Be Ready for Storm Season *Preparedness is the Best Defense*

Spring is on our doorstep and like many of you, I'm looking forward to more opportunities to be outdoors and enjoy warmer weather. Springtime brings many of my favorite activities like cooking out with family and friends, time spent working in the garden and simply slowing down a bit to enjoy life. Unfortunately, spring and summer can also create the perfect conditions for severe storms.

Southwest Iowa REC crews are always prepared and standing by to respond should power outages occur in our area. When severe storms cause power disruptions, our line crews take all necessary precautions before they get to work on any downed lines.

I would encourage you to also practice safety and preparedness to protect your family during storms and outages.

The Federal Emergency Management Agency recommends the items below as a starting point for storm and disaster preparedness, but you can visit www.ready.gov for additional resources.

- Stock your pantry with a three-day supply of non-perishable food, including canned goods, energy bars, peanut butter, powdered milk, instant coffee, water and other essentials (i.e., diapers and toiletries).
- Confirm that you have adequate sanitation and hygiene supplies including towelettes, soap and hand sanitizer.
- Ensure your First Aid kit is stocked with pain relievers, bandages and other medical essentials, and make sure your prescriptions are current.
- Set aside basic household items you will need, including flashlights, batteries, a manual can opener and portable, battery-powered radio or TV.

Organize emergency supplies so they are easily accessible in one location.

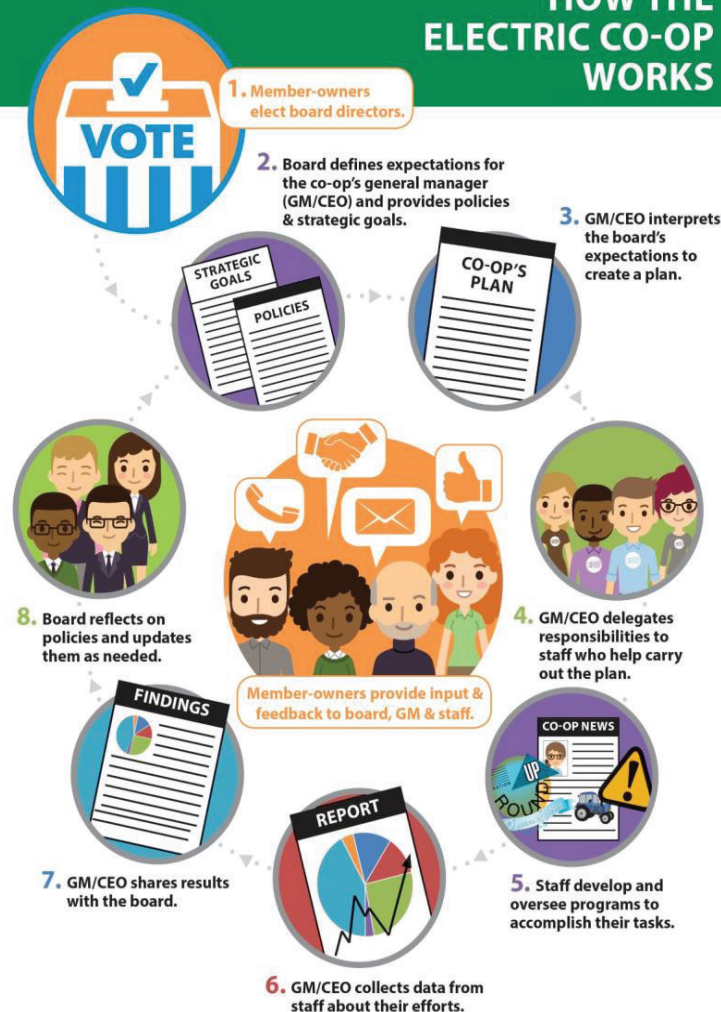
In the event of a prolonged power outage, turn off major appliances, TVs, computers and other sensitive electronics. This will help avert damage from potential power surges and will also help prevent overloading circuits during power restoration. That said, do leave one light on so you will know when power is restored.

If you plan to use a portable generator, make sure it's rated to handle the amount of power you will need, and always review the manufacturer's instructions to operate it safely. Listen to local news or a NOAA Weather Radio for storm and emergency information, and check Southwest Iowa REC's Facebook page for restoration updates.



Phil Kinser

HOW THE ELECTRIC CO-OP WORKS



Severe storms can occasionally bring down power lines. If you see a downed line, always assume it's energized and never approach it. If flooding occurs, never walk through areas where power lines could be submerged.

Advance planning for severe storms or other emergencies can reduce stress and anxiety caused by the weather event and lessen the impact of the storm's effects.

Sign up for NOAA emergency alerts and warnings and follow us on Facebook for the latest power restoration updates. If you experience an outage, please don't report it on Facebook. Call our outage reporting number at 888-220-4869--this is the fastest way to let us know if your power is out.

I hope we don't experience severe storms over the spring and summer months like the tornadoes we experienced in April and May last year, but we can never predict Mother Nature's plans. At Southwest Iowa REC, we recommend that you make a plan today--because storm preparedness is always our best defense.

ARE YOU STORM READY?

Follow these safety and preparation tips during spring and summer storm season.

Be Prepared.

- Create an emergency kit with power outage essentials: batteries, power banks, flashlights, non-perishable foods, water, medical supplies and prescriptions.
- Develop an emergency family plan with meeting points, communication methods and evacuation routes. Share your plan with all family members.
- Monitor weather for important updates that could impact your emergency plan.

Stay Safe.

- Ensure a safe shelter: Stay away from windows and doors. In tornadoes, move to a basement or an interior room without windows.
- Use portable generators safely: operate outdoors in well-ventilated areas, place on a flat, dry surface, do not overload and always read the operating manual before use.
- Severe storms can bring down tree limbs and power lines. If you encounter a downed line, stay back. Always assume a downed line is live and dangerous.



Energy Issues at the Forefront of the 2025 Legislative Session

By Haley Moon, senior manager of policy & advocacy at the Iowa Association of Electric Cooperatives



Energy policy remains a top priority for Iowa lawmakers in the current state legislative session. Since the 91st General Assembly began on January 13, legislative leaders and Governor Reynolds have emphasized key issues that could impact how electricity reaches Iowans in their homes and businesses. As always, Iowa's electric cooperatives are actively engaged in these discussions to ensure the voices of co-op member-consumers are heard and that the best interests of rural Iowa are considered.

The following are key legislative issues under discussion and their potential impact on your local electric cooperative:

Service Territory Protections

Protecting the state's defined electric service areas remains the top priority for Iowa's electric cooperatives. This law, established nearly 50 years ago, is essential for cooperatives to invest in local economic development, maintain affordable rates and ensure reliable service. The Iowa Association of Electric Cooperatives (IAEC) remains vigilant in safeguarding these protections from legislative proposals that could undermine them. Learn more at www.ProtectRuralIowa.com.

Third-Party Solar Developments

Proposals in the legislature aim to establish third-party community solar programs in Iowa. These arrangements are different from the community solar programs available from some Iowa electric co-ops. You may have received information at your home or heard of neighbors being approached about subscribing to or leasing land for non co-op community solar projects.

While electric cooperatives support a diverse energy generation mix, there are concerns that these entities do not adhere to the same consumer protection standards required of public utilities. Additionally, these projects could disrupt assigned service territories that are crucial for co-ops. If you have questions about solar energy or are approached by one of

these third-party entities, please contact your local cooperative for more information.

Governor's Energy Priorities

Governor Reynolds has outlined several energy-related priorities aimed at shaping Iowa's future in energy generation, transmission and distribution. These initiatives cover a wide range of topics, including how investor-owned utilities plan for and set rates and invest in new energy projects, ways the state of Iowa can examine the potential of nuclear energy, and making funds available for water infrastructure projects.

One issue of particular importance to electric cooperatives is the Right of First Refusal (ROFR). ROFR grants Iowa-based electric utilities the first opportunity to construct and maintain regional transmission projects within the state. Electric cooperatives support ROFR, as it enables Iowa's utilities to continue working together on critical infrastructure projects that help maintain reliable electricity service.

Iowa's utilities employ thousands of Iowans to design, maintain and repair power lines in the state to ensure power continues to flow during our most extreme weather conditions. They invest in our communities and utilize Iowa companies as suppliers while working with landowners to protect Iowans' interests. Learn more at www.IowaElectricHomeTeam.com.

Staying Engaged in the Legislative Process

As the legislative session progresses, your local electric cooperative directors and staff are actively engaging with lawmakers to advocate for policies that protect and strengthen rural Iowa's energy future.

For more information on these issues or to stay updated on legislative developments, please reach out to Southwest Iowa REC.



Welcome to our new employee!

On February 10th, Southwest Iowa REC welcomed Brayden Daly as an apprentice lineman in the Corning Office. Brayden is from Bedford, Iowa, and recently graduated from DMACC with an Electric utility technology degree. Welcome, Brayden!

WINTER MORATORIUM ENDS APRIL 1, 2025

For those members who are on energy assistance or have a past-due electric bill – please remember that you need to contact the REC office before April 1, 2025, to make payment arrangements on your past-due bill to avoid disconnection of your electric service.

Chicken Florentine

Ingredients

- 2 large chicken breasts cut in half lengthwise
- 3 tablespoons butter
- 1 tablespoon olive oil
- 8 ounces white button mushrooms sliced
- 3 cloves garlic minced
- ½ cup dry white wine
- 1 cup heavy whipping cream
- ½ cup freshly grated Parmesan cheese
- 4 cups baby spinach



Instructions

1. Heat 1 tablespoon butter and olive oil in a large skillet over medium heat. Add the chicken and cook until golden brown and cooked through. Plate the chicken and cover to keep warm.
2. Add remaining butter to same skillet over medium/medium high and cook the mushrooms until golden brown; approximately 8 minutes. Turn the heat down to low and add the garlic. Cook for 1 minute stirring constantly. Plate the mushrooms and garlic and cover to keep warm.
3. Add the wine and scrap to remove any browned bits from the skillet.

Reduce the wine by half; approximately 3-4 minutes. Add the cream and let it simmer for about 15 -20 minutes; until is reduced by half. Slowly add Parmesan cheese stirring constantly until melted. Add spinach and cooked just until wilted. Place the chicken, mushrooms and garlic back in the pan. Cover and warm for 2-3 minutes.

Notes

- Most chicken breasts these days are quite large. Cut them in half lengthwise. They will cook better and they will still be more than an ample serving.
- The heat should be reduced when adding fresh minced garlic. Garlic burns easily so stir constantly.
- Cook mushrooms over medium to medium/high to ensure beautiful browning and to ensure that the moisture from the mushrooms is gone before adding the cream.
- Use heavy whipping cream. If you go with something lighter like half n half then you will need a thickening mixture like a slurry or a cornstarch mixture. Half n half will never reduce enough to thicken but heavy whipping cream will.
- Don't add the spinach until the very end. It only takes a couple of minutes to wilt

Director Nomination Process to Begin Soon

Southwest Iowa REC's board elections will be held at the annual meeting on Thursday, September 4, 2025. Members will have the opportunity to vote by mail ahead of the meeting or in person at the meeting.

Serving on Southwest Iowa REC's board means you're making a difference locally, using your individual talents and perspective to guide big decisions about the co-op that in turn benefit the larger community. While day-to-day decisions are made by co-op staff, major decisions are made by the board, whose mission is to look out for the vitality of the co-op and the community it serves. On a granular level, Southwest Iowa REC board members typically provide input and guidance on:

- budgets
- co-op goals and direction
- co-op's community/charitable contributions
- capital investments and upgrades in equipment and technology
- renewable investments and energy mix
- co-op's role and involvement in economic development

The energy industry is undergoing a major transition. Technology advancements and increased consumer preference for more renewable energy is driving change. Southwest Iowa REC is facing big decisions, and board members have an opportunity to help chart a course for our future. To serve the community best, we need input from a wide range of people that represent the broad spectrum of views within community.

While you don't need to be an expert in electricity or business to run for the board, you do need to have a passion for the community and a willingness to actively serve and learn. We're looking for individuals who can represent the full gamut of the members we serve. Our board meets on a regular basis, and we offer specialized training opportunities to help board members make informed decisions. Board members gain a deeper understanding of the electric utility industry, the cooperative business model and local economic development efforts.

Ultimately, our board is the community pulse for the co-op and helps keep us on the right track. We love our community and want to help it thrive. If you share the same commitment and want to contribute to the greater good in a tangible way, I hope you'll consider running for a board position.

More details about Southwest Iowa REC's director election process for 2025 will be published in future newsletters.

ENERGY EFFICIENCY TIP OF THE MONTH

March is an ideal time to service your home cooling system, ensuring it runs efficiently when the heat of summer arrives. Routine maintenance, like cleaning or replacing filters, checking refrigerant levels and inspecting parts, can improve your system's energy efficiency and lower your energy bills. By addressing potential issues early, you can avoid costly emergency repairs and extend the lifespan of your unit. Scheduling service in the spring helps you beat the peak-season rush, giving you faster access to qualified technicians. A well-maintained cooling system can save energy and keep your home comfortable all summer long.



Complaints Resolution Process

Southwest Iowa REC makes every effort to resolve all complaints brought to its attention.

You can contact us at:

1801 Grove Avenue, Corning, Iowa 50841
1502 W South Street, Mount Ayr, Iowa 50854
415 Broad Avenue, Stanton, Iowa 51573
Or you can call (888) 220-4869.

If your complaint is related to service disconnection, safety or engineering standards, or renewable energy and Southwest Iowa REC does not resolve your complaint, you may request assistance from the Iowa Utilities Board by calling (515) 725-7321, or toll-free 1-877-565-4450, by writing to 1375 E. Court Avenue, Des Moines, IA 50319-0069, or by email to customer@iub.iowa.gov.



SOUTHWEST IOWA
RURAL ELECTRIC COOPERATIVE
Your Touchstone Energy® Cooperative



Find us on
Facebook

Corning
1801 Grove Ave., Corning, IA 50841
Mount Ayr
1502 W. South St., Mount Ayr, IA 50854
Stanton
415 Broad Ave., Stanton, IA 51573
Phone Number: (888) 220-4869

Board of Directors
Marilyn Werner, President
Mark Herzberg, Vice President
Kay Fast-Deyoe, Secretary
Jason Smith, Treasurer
Alan Spencer
Dana Morgan
Bonnie Larson
Adam Boswell
Terry Barnes
Dale Walkup

Phil Kinser, CEO

Southwest Iowa REC is an equal opportunity provider and employer.