

# Southwest lines

Corning | Mount Ayr | Stanton

A monthly publication for members of Southwest Iowa Rural Electric Cooperative

March 2024

## Help us Find these Former Members

We are looking for the following former members of the cooperative. This month, we will be showing names listed A-J and next month we will do K-Z. These members have patronage checks at our offices. If the member is deceased, we would like to have a family member contact us with estate information so we can refund their patronage. Thank you for your help



ABBOTT	DUSTIN A	BRYANT	PAUL	FAUX	EVERETT	HANSEN	DALE H
ADAMS	MICHELLE	BULLER	SHIRLEY L	FICHTER	JAMES L	HARRINGTON	DANETTE
ALDEN	ASHLEY E	BURCHAM	SANDRA	FICHTER	JUSTIN M	HARRIS	RICHARD D
ALMQUIST	GARY	BURG	GARY	FIENHAGE	HENRY A	HATFIELD	SANDRA
ANDERSEN	CHRISTOPHER	BUTCHER	BECKIE	FILKINS	EVELYN G	HEBENSBERGER	KENNETH
ANDERSON	JOHN W	CAMPBELL	LAUREN	FINDLEY	JAMES R	HENDERSON	J R
ANDERSON	CHRIS	CECETKA	JAMES R	FISHER	DEAN C	HIATT	RANDY
ARNOLD	RICK E	CELSI	CHARLENE	FLEMING	MISTY	HICKMAN JR	RALPH
BACON	JEAN	CHRISLIP	JON C	FOGGIA	GENE	HICKMAN SR	RALPH
BAIRD	JAMES	CHRISTENSEN	TOM	FOREMAN	DON	HILL	MARY L
BARKER	CHRISTY	CHRISTIANSON	JOAN	FOUREZ	R M	HOSSLE	MICHAEL J
BARNES	MICHAEL J	CLOER	DAVID S	FREDRICKSON	MATT	HOUCK	JAN
BAYER	EUGENE	COE	WILLIAM	FUQUA	DOUG	HULS	JUNIOR
BEEDLE	ROBERT	COLWELL	WENDY	GALLUP	SCOTT	HUNTER	STEPHEN
BEEMER	BRANNEN	CONNET	DAWN	GARDNER	ALAN E	HUTTON	ROBERT
BELL	JEFF	CREES	JASON	GEHRTS	JAMES	INGERSOLL	THOMAS C
BELL	MAX	CRONBAUGH	MARVIN	GELNER	DUSTIN C	INGRAHAM	JEREMY
BINKLEY	MICHAEL J	CUNNINGHAM	JADEANA	GIEFING	JOHN	JACKSON	WENDELL
BLAIR	DUANE	CURRENT	CHAS	GLASSINGER	DANNY	JACOBSEN	MARIE
BLAKE	JEFFREY	DAILY	BOB	GOECKER	VIRGINA A	JAECKLE	GARY
BLEECHER	CHRISTINE	DALE	LOUVA G	GOODALE	OPAL	JAHN	DARRYL
BODNAR	ROBERT A	DARDEN	KATHRYN S	GOODNIGHT	RICK	JAMES	GARY
BOOTHE	JUSTIN	DARDEN JR	HENRY H	GRAY	EDWARD	JEFFERSON	WILLIAM D
BRADLEY	MARILYN J	DARLING	DEB	GRAY	RUSS	JOHNSON	MERVYN
BRADLEY	ELMER	DAVENPORT	FRANK E	GREELIS	JERRY	JOHNSON	PHILLIP A
BRANDT	GARY E	DAVIS	CLYDE A	GREEN	DALTON B	JOHNSON	JAYLA
BRIANT	ROBERT E	DELUHERY	MATT	GRIGGS	WILLIAM F	JOHNSON	ALLISON
BRIGGS	AUDRIA	DOWNING	ADAM C	GRIM	HARRIET	JOHNSON	MARK P
BRINER	LISA	DOYEN JR	CLEMENT J	GRIMES	DARLENE	JONES	DAVID K
BRISTOW	CODY J	DOYLE	RICHARD L	HAGENKORD	GARY	JONES	SCOTT
BROSHAR	FLOYD	DUFF	STEVE	HAIGWOOD	MIKE	JONES	DAVID
BROWN	JASON S	DUGAN	LOWELL	HALL	LINDA S	JONES	CHAS E
BROWN	JEFF	FARMS	GUILFORD	HANAWALT	JAMES	JOYSLIN	JANE B

## Complaints Resolution Process

Southwest Iowa REC makes every effort to resolve all complaints brought to its attention.

You can contact us at:

1801 Grove Avenue, Corning, Iowa 50841

1502 W South Street, Mount Ayr, Iowa 50854

415 Broad Avenue, Stanton, Iowa 51573

Or you can call (888) 220-4869.

If your complaint is related to service disconnection, safety or engineering standards, or renewable energy and Southwest Iowa REC does not resolve your complaint, you may request assistance from the Iowa Utilities Board by calling (515) 725-7321, or toll-free 1-877-565-4450, by writing to 1375 E. Court Avenue, Des Moines, IA 50319-0069, or by email to [customer@iub.iowa.gov](mailto:customer@iub.iowa.gov).

Mark your calendars for

Thursday, September 5, 2024

for this year's

Southwest Iowa REC

Annual Meeting!

# Collaborating for Resilience – Preparing for Potential Grid Challenges

I recently had a member stop in to visit about news reports he had been seeing regarding the potential for rolling blackouts. As we navigate the dynamic landscape of energy distribution, I want to keep you informed and prepared for the potential of rolling grid blackouts that could impact our community. While our cooperative is committed to providing reliable service, unforeseen challenges can sometimes lead to temporary disruptions. In the spirit of collaboration, I would like to share some insights on how we can collectively prepare for such occurrences.

## What is a Rolling Blackout?

A rolling blackout is a temporary power outage that is purposely done. The blackout is arranged so that it's only in certain areas for a limited amount of time. They are called "rolling" because the outage moves from one area to the next so that power isn't out for too long in any one location. The purpose of a rolling blackout is to balance out the electric grid, so it doesn't get overloaded and leads to a larger, uncontrolled power outage.

## How is a Rolling Blackout Managed?

Rolling blackouts are done on purpose and they are managed when the demand for electricity exceeds the power supply capability. Since there's usually little notice before a rolling blackout is needed, systems need to be in place so that utilities can act quickly.

Below is a quick overview of the steps that are taken before, during and after a rolling blackout to minimize the impact on end consumers.

- Electric grid operators constantly monitor power supply. If the supply dips below a certain threshold the utilities will be notified that the load needs to be reduced.
- The utilities look for ways to reduce the load to balance out the supply.
- Utilities may determine that a rolling blackout is needed. If possible, the utility will send out notifications and alerts about when rolling blackouts could occur.
- The electric grid will be monitored during the rolling blackout to determine when things have balanced out enough to completely restore power.

**Understanding the Situation:** Our cooperative is dedicated to delivering reliable power to every home and business we serve in our community. However, external factors such as extreme weather events, increased energy demand, or unforeseen issues in the broader grid system may necessitate temporary measures like rolling blackouts.

**Southwest Iowa REC has a predetermined Load Shedding procedure in place if called upon to take that extraordinary step.**

**What You Can Do:** In the event of a potential rolling blackout, there are proactive steps you can take to ensure the comfort and safety of your household:

### 1. Emergency Preparedness Kit:

- Assemble an emergency kit with essential supplies including flashlights, batteries, non-perishable food, and water to sustain your family for at least 72 hours.

### 2. Backup Power Sources:

- Consider investing in a home generator to provide backup power during outages. Ensure generators are used safely and in accordance with manufacturer guidelines.

### 3. Energy Conservation:

- Practice energy conservation by turning off non-essential appliances and lights during peak demand periods. Simple actions can significantly reduce the strain on the grid.

### 4. Communication Plan:

- Establish a family communication plan so everyone is aware of the situation and knows how to contact each other in case of an extended outage.

**Cooperative Support:** Rest assured, our team is actively monitoring the grid's condition and working tirelessly to minimize any potential impact on your service. We are committed to transparent communication and will keep you informed of any developments or necessary actions.

**Community Strength:** Our cooperative thrives on the strength of our community. Together, we can navigate challenges and emerge stronger. Your cooperation and understanding during these times reinforce the cooperative spirit that defines us.

In conclusion, I want to express my gratitude for your continued support. Our cooperative remains steadfast in its commitment to providing reliable power while exploring sustainable solutions for the future. Should you have any questions or concerns, please feel free to reach out to us.

Thank you for being a valued member of our cooperative family.



**Phil Kinser**

## Lineworker Appreciation Day

America's electric cooperatives have designated the second Monday of April as National Lineman Appreciation Day. Southwest Iowa REC gratefully supports our 17 linemen that maintain roughly 2,525 miles of power lines in our service territory and recognizing the risks they take to carry out their daily duties. We would like to take this opportunity on April 8th to acknowledge and appreciate those men at Southwest Iowa REC that work so hard to provide our members with safe and reliable energy 24 hours a day throughout the entire year!



# 2024 Residential Energy Efficiency Incentives – Effective 1/1/2024

**Southwest Iowa Rural Electric Cooperative** provides our members with ways to save on your energy budget. We offer rebates on the following products that will offer substantial savings for your home.

**Appliances:** When replacing appliances, always look for Energy Star qualified appliances. Appliances can account for 13% of your energy bill. Energy Star qualified appliances incorporate advanced technologies that use 10-50% less energy and water than standard models.

**Indoor Air Quality:** Equipment must serve the entire conditioned space of the home. Limit of two air quality system per home.

**Heating and Cooling:** As much as half of the energy used in your home goes to heating and cooling. So, making smart decisions about your home's heating, ventilating, and air conditioning (HVAC) system can have a big effect on your utility bills - and your comfort.

Geothermal Heat Pump, Cold Climate Air Source Heat Pump, Air Source Heat Pump, Energy Star Central AC

## Outdoor Security Lighting

**Energy Star** LED or DLC Qualified Fixtures

**Water Heaters:** From warm showers to clean dishes, we count on hot water. In fact, the average household spends \$400-\$600 per year on water heating - making it the second largest energy expenditure behind heating and cooling. Depending on the technology you choose, you can cut your water heating costs in half!

**Energy Star** Heat Pump Water Heater, Geothermal Assisted Unit (DSWH), Electric Resistance Storage Tank Water Heater

**Weatherization:** Weatherizing your home will put money back in your pocket every month. It's that simple. On average, weatherization helps homeowners reduce their energy consumption by 25% to 30% - a savings of \$600 per year, every year. Older homes save even more - around 35% or more!

**New Home Construction:** Building an All-Star home is the maximum goal you can

obtain toward energy efficiency and will result in putting the most money back in your pocket.

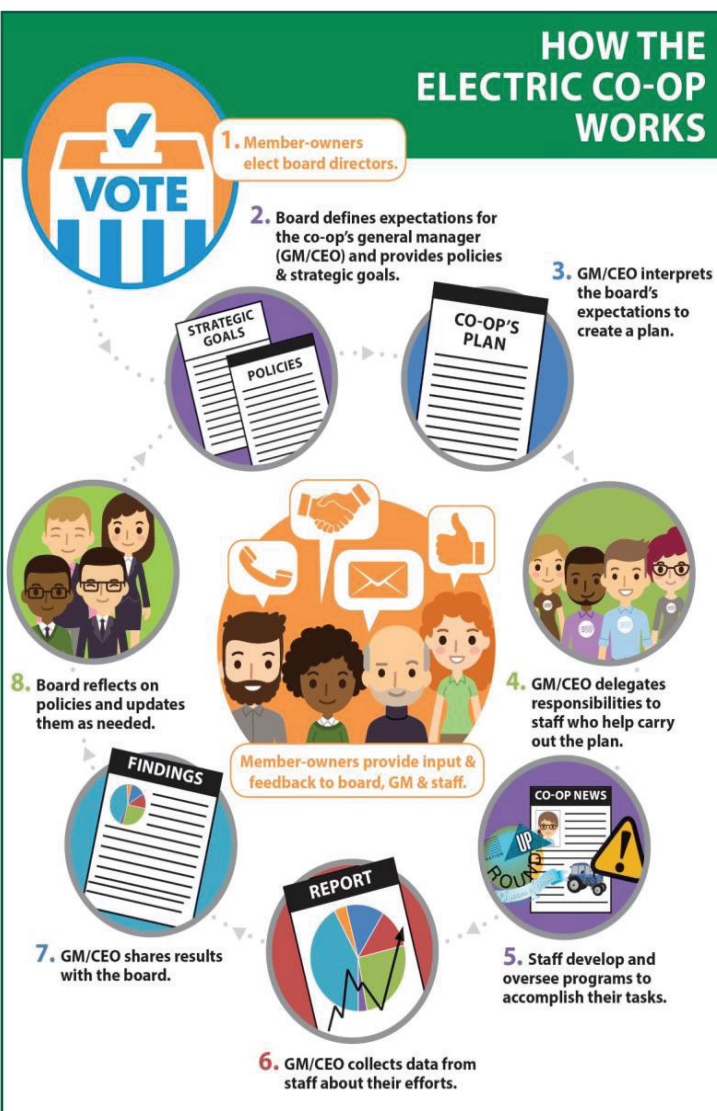
## Other Programs:

**Electric Vehicle Level 2 Charger**  
(Must be installed at a residence served by Southwest Iowa REC)

## EV Ready

• 240/208 Volt wiring with 50-amp breaker (to support 40-amp charging)  
box on back or side wall of garage with NEMA 6-50 or 14-50 outlet.

Please visit [www.swiarec.coop/rebates](http://www.swiarec.coop/rebates) to find the rebate forms and requirements.



## Director Nomination Process to Begin Soon

Southwest Iowa REC's board elections will be held at the annual meeting on Thursday, September 5, 2024. Members will have the opportunity to vote by mail ahead of the meeting or in person at the meeting.

Serving on Southwest Iowa REC's board means you're making a difference locally, using your individual talents and perspective to guide big decisions about the co-op that in turn benefit the larger community. While day-to-day decisions are made by co-op staff, major decisions are made by the board, whose mission is to look out for the vitality of the co-op and the community it serves. On a granular level, Southwest Iowa REC board members typically provide input and guidance on:

- budgets
- co-op goals and direction
- co-op's community/charitable contributions
- capital investments and upgrades in equipment and technology
- renewable investments and energy mix
- co-op's role and involvement in economic development

The energy industry is undergoing a major transition. Technology advancements and increased consumer preference for more renewable energy is driving change. Southwest Iowa REC is facing big decisions, and board members have an opportunity to help chart a course for our future. To serve the community best, we need input from a wide range of people that represent the broad spectrum of views within community.

While you don't need to be an expert in electricity or business to run for the board, you do need to have a passion for the community and a willingness to actively serve and learn. We're looking for individuals who can represent the full gamut of the members we serve. Our board meets on a regular basis, and we offer specialized training opportunities to help board members make informed decisions. Board members gain a deeper understanding of the electric utility industry, the cooperative business model and local economic development efforts.

Ultimately, our board is the community pulse for the co-op and helps keep us on the right track. We love our community and want to help it thrive. If you share the same commitment and want to contribute to the greater good in a tangible way, I hope you'll consider running for a board position.

More details about Southwest Iowa REC's director election process for 2024 will be published in future newsletters.



# ENERGY EFFICIENCY

## TIP OF THE MONTH

Lengthen the life of your clothes dryer with regular cleaning. Clean the lint filter after every load, which improves air circulation and safety. Check the lint trap opening and use a vacuum to remove any lint that's fallen inside the opening.

If you use dryer sheets, check the lint filter for residue buildup. Remove any residue with hot water and a nylon brush or toothbrush. Over time, dryer sheets can leave a film on the filter, which can affect the performance of the motor.



## STATE LAW REQUIRES NOTIFICATION OF ALTERNATE ENERGY PRODUCTION

In 2012, the Iowa Legislature approved a bill that requires notification to electric utilities prior to installing an alternate energy generator. The notification requirement applies to any type of electric generating technology including:

- solar
- wind turbine
- waste management
- resource recovery
- refuse-derived fuel
- agricultural crops or residue
- wood-burning facility that will be connected to an electric transmission or distribution line

Under this legislation, the owner of an alternate energy production facility must provide written notification to their electric utility at least 30 days before construction or installation of the generator.

If you are considering installing an alternate energy system – please contact Southwest Iowa REC at (888) 220-4869. Let us provide information and assistance BEFORE making the decision to purchase any type of alternate energy system that requires interconnection with the electric grid.

## Easy Ground Beef Stroganoff



Ground Beef Stroganoff is an easy and delicious dinner recipe that comes together quickly with ground beef, a gravy packet for lots of flavor, sour cream, and cream of mushroom soup. It's the easy way to make the classic comfort food beef stroganoff.

- 1 pound lean ground beef
- 1 small onion finely diced
- 1 teaspoon garlic powder
- ½ teaspoon onion powder
- ½ teaspoon salt
- ½ teaspoon pepper
- 1 packet (0.87 oz) brown gravy mix
- 1 cup cold water
- 1 can (10 oz) cream of mushroom soup
- 1/2 cup sour cream
- 2 teaspoons dried parsley
- 1 bag (12 oz) wide egg noodles or bowtie noodles



Enjoy!

## Instructions

1. Fill a pot with water and start it boiling while you cook the ground beef mixture. That way once the meat is ready to simmer, the water is already boiling and you just have to add your egg noodles in.
2. In a skillet pan, over medium-high heat, cook and crumble the ground beef, onion, garlic powder, onion powder, salt & pepper until ground beef is no longer pink.
3. Drain the excess grease/liquid.
4. Whisk together the contents of the gravy packet with the cold water until combined. Pour this into the ground beef.
5. Add the sour cream and cream of mushroom soup and stir everything together until combined.
6. Let the mixture simmer over medium or medium-low heat while the noodles cook (about 10 minutes).
7. Cook noodles according to package instructions. Remember to add about 1 teaspoon of salt to the boiling water so the noodles have flavor.
8. When the noodles are done cooking, drain them but do not rinse them.
9. Add the noodles and dried parsley into the creamy ground beef mixture and stir together to combine.
10. Serve!

## WINTER MORATORIUM ENDS APRIL 1, 2024

For those members who are on energy assistance or have a past-due electric bill – please remember that you need to contact the REC office before April 1, 2024, to make payment arrangements on your past-due bill to avoid disconnection of your electric service.



**Corning**  
1801 Grove Ave., Corning, IA 50841

**Mount Ayr**  
1502 W. South St., Mount Ayr, IA 50854

**Stanton**  
415 Broad Ave., Stanton, IA 51573

**Phone Number: (888) 220-4869**

**Southwest Iowa REC is an equal opportunity provider and employer.**

## Board of Directors

Marilyn Werner, President  
Mark Herzberg, Vice President  
Kay Fast-Deyoe, Secretary  
Jason Smith, Treasurer  
Alan Spencer  
Dana Morgan  
Bonnie Larson

Phil Kinser, CEO

Deena Moore  
Terry Barnes  
Dale Walkup